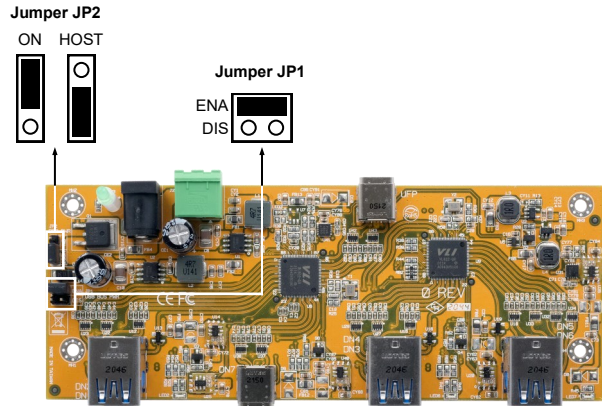


CONNECTIONS

Jumper for power supply control:

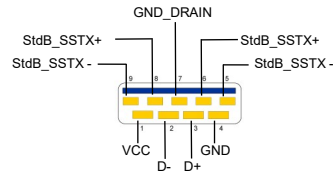
The two jumpers **Bus Power (JP1)** and **Host Control (JP2)** can be used to configure the power supply and power output at the downstream ports as required. The following settings can be made:



| Settings              |                | Status |         | Function       |       |
|-----------------------|----------------|--------|---------|----------------|-------|
| Jumper JP1            | Jumper JP2     | Power  | Host PC | Hub Downstream |       |
| Bus Power             | Host control   |        |         | Data           | Power |
| ENA <sup>(ble)</sup>  | ON (Power on)  | on     | off     | no             | on    |
|                       |                | off    | on      | yes            | on    |
| DIS <sup>(able)</sup> | ON (Power on)  | on     | off     | no             | on    |
|                       |                | off    | on      | no             | off   |
| ENA <sup>(ble)</sup>  | HOST (control) | on     | off     | no             | off   |
|                       |                | off    | on      | yes            | on    |
| DIS <sup>(able)</sup> | HOST (control) | on     | off     | no             | off   |
|                       |                | off    | on      | no             | off   |
| DIS/ENA               | HOST/ON        | on     | on      | yes            | on    |
|                       |                | off    | off     | no             | off   |

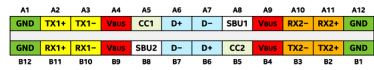
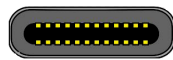
CONNECTIONS

USB 3.2 Gen 1 A-Port:

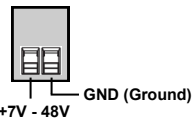


**Attention!**  
Never plug in with force or in wrong direction.

USB 3.2 Gen 2x1 C-Port:

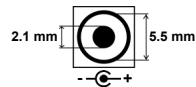


+7V - 48V DC Terminal Block:



**ATTENTION!**  
Please pay attention to the correct polarity!  
Never connect the power supply unit to the terminal block when it is switched on!

+7V - 48V DC-Connector:



**ATTENTION!**  
Only for use with the power supply included in the scope of delivery or another compliant power supply!

HARDWARE INSTALLATION

As this is a PCBA for installation in customer applications, we are unable to provide you with installation instructions. Please observe the necessary safety precautions during installation.

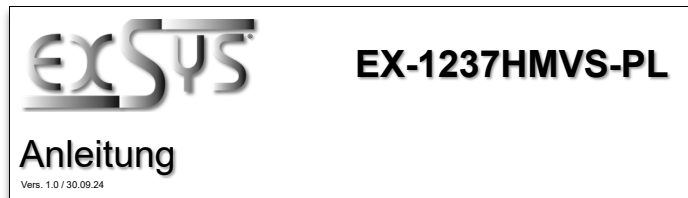


**ATTENTION!**  
When installing in your application, take the necessary ESD precautions.

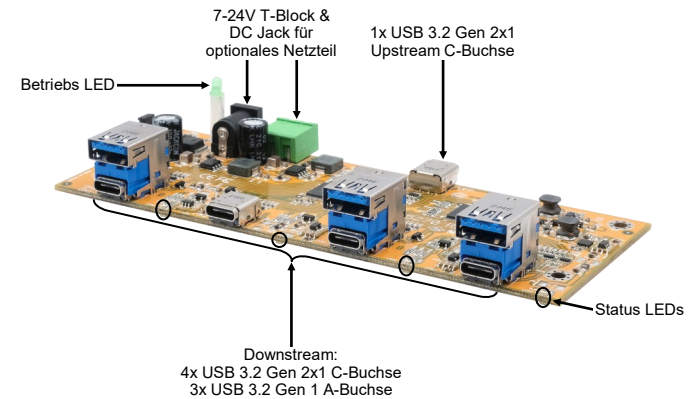
Germany:  
EXSYS Vertriebs GmbH  
Industriestrasse 8  
61449 Steinbach  
www.exsys.de

Switzerland:  
EXSYS Vertriebs GmbH  
Dübendorfstrasse 17  
8602 Wangen  
www.exsys.ch

Italy:  
EXSYS Italia Srl  
Via Belvedere, 45/B  
I-22100 Como  
www.exsys.it



AUFBAU



BESCHREIBUNG & TECHNISCHE DATEN

Das USB 3.2 Gen 2x1 Hub Board EX-1237HMVS-PL ist ein voll funktionsfähiger industrieller USB 3.2 Hub für die Integration in kundenspezifische Geräte, Baugruppen oder Gehäuse. Er ist ideal für Embedded Systeme, Kioske, industrielle Automatisierung und andere Spezialanwendungen, die mehrere USB-Anschlüsse benötigen.

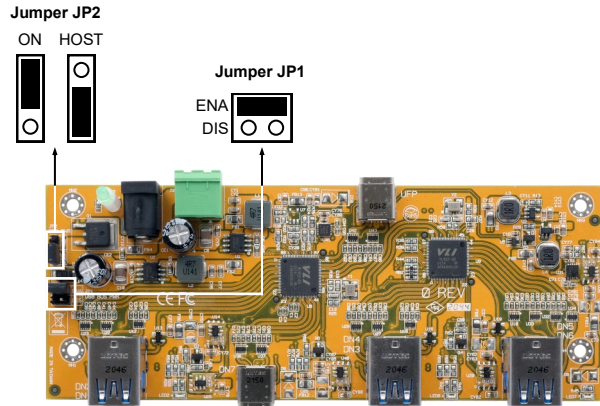
Kompatibilität: USB 1.1, 2.0, 3.0, 3.1, 3.2  
 Betriebssysteme: Betriebssystemunabhängig, keine Software oder Treiber notwendig  
 Anschlüsse: 4x USB 3.2 Gen 2x1 C-Buchse, 3x USB 3.2 Gen 1 A-Buchse, 1x USB 3.2 Gen 2x1 C-Buchse, 1x Terminal Block 7-24V DC, DC-Buchse 7-24V

Lieferumfang: EX-1237HMVS-PL, Terminal Block

ANSCHLÜSSE

Jumper zur Steuerung der Stromversorgung:

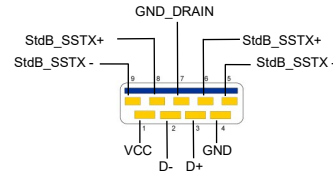
Über die beiden Jumper **Bus Power (JP1)** und **Host Control (JP2)** kann die Stromversorgung und die Stromausgabe an den Downstream Ports nach Wunsch konfiguriert werden. Die folgenden Einstellungen sind möglich:



| Einstellungen         |                | Status   |         | Funktion       |       |
|-----------------------|----------------|----------|---------|----------------|-------|
| Jumper JP1            | Jumper JP2     | Netzteil | Host PC | Hub Downstream |       |
| Bus Power             | Host control   |          |         | Daten          | Power |
| ENA <sup>(ble)</sup>  | ON (Power on)  | on       | off     | nein           | on    |
|                       |                | off      | on      | ja             | on    |
| DIS <sup>(able)</sup> | ON (Power on)  | on       | off     | nein           | on    |
|                       |                | off      | on      | nein           | off   |
| ENA <sup>(ble)</sup>  | HOST (control) | on       | off     | nein           | off   |
|                       |                | off      | on      | ja             | on    |
| DIS <sup>(able)</sup> | HOST (control) | on       | off     | nein           | off   |
|                       |                | off      | on      | nein           | off   |
| DIS/ENA               | HOST/ON        | on       | on      | ja             | on    |
|                       |                | off      | off     | nein           | off   |

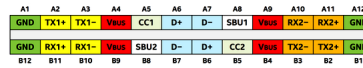
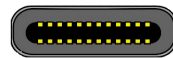
ANSCHLÜSSE

USB 3.2 Gen 1 A-Buchse:

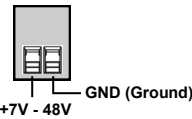


**Achtung!**  
Stecker niemals umgekehrt oder mit Gewalt einstecken.

USB 3.2 Gen 2x1 C-Buchse:

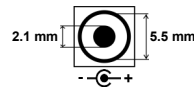


+7V - 24V DC Terminal Block:



**ACHTUNG!**  
Bitte auf die richtige Polarität achten!  
Netzteil nie eingeschaltet mit dem Terminal Block verbinden!

+7V - 24V DC-Buchse:



**ACHTUNG!**  
Nur zur Verwendung mit im Lieferumfang enthaltenem Netzteil oder einem anderem konformen Netzteil!

HARDWARE INSTALLATION

Da es sich beim vorliegenden Produkt um eine Platine zum Einbau in kundenspezifische Anwendungen handelt, können wir Ihnen keine Einbauanleitung zur Verfügung stellen. Bitte beachten Sie bei der Montage die notwendigen Sicherheitsvorkehrungen.

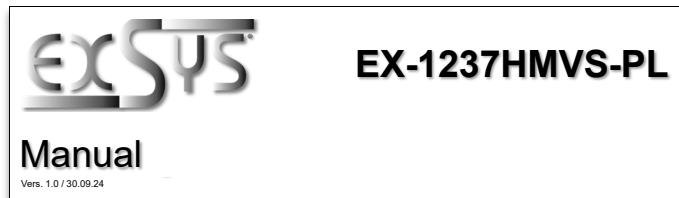


**ACHTUNG!**  
Treffen Sie bei der Installation in Ihrer Anwendung die notwendigen ESD Schutzmassnahmen

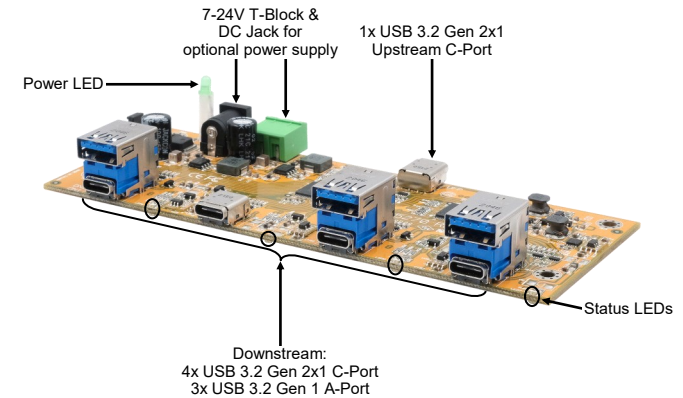
Deutschland:  
EXSYS Vertriebs GmbH  
Industriestrasse 8  
61449 Steinbach  
www.exsys.de

Schweiz:  
EXSYS Vertriebs GmbH  
Dübendorferstrasse 17  
8602 Wangen  
www.exsys.ch

Italia:  
EXSYS Italia Srl  
Via Belvedere, 45/B  
I-22100 Como  
www.exsys.it



LAYOUT



DESCRIPTION & TECHNICAL INFORMATION

The USB 3.2 Gen 2x1 Hub Board EX-1237HMVS-PL is a fully functional industrial USB 3.2 hub for integration into custom devices, assemblies or enclosures. It is ideal for embedded systems, kiosks, industrial automation and other specialised applications requiring multiple USB ports.

- Compatibility: USB 1.1, 2.0, 3.0, 3.1, 3.2
- Operating Systems: OS independent, no software or drivers required
- Connectors: 4x USB 3.2 Gen 2x1 C-Port, 3x USB 3.2 Gen 1 A-Port, 1x USB 3.2 Gen 2x1 C-Port, 1x Terminal Block 7-24V DC, DC Jack 7-24V

**Extent of delivery: EX-1237HMVS-PL, Terminal Block**